



Facebook Future of Business COVID-19 High Frequency Survey Wave 1 28th – 31st May

Facebook Business Page Administrators in ~50 countries ~26,000 business owners & managers.

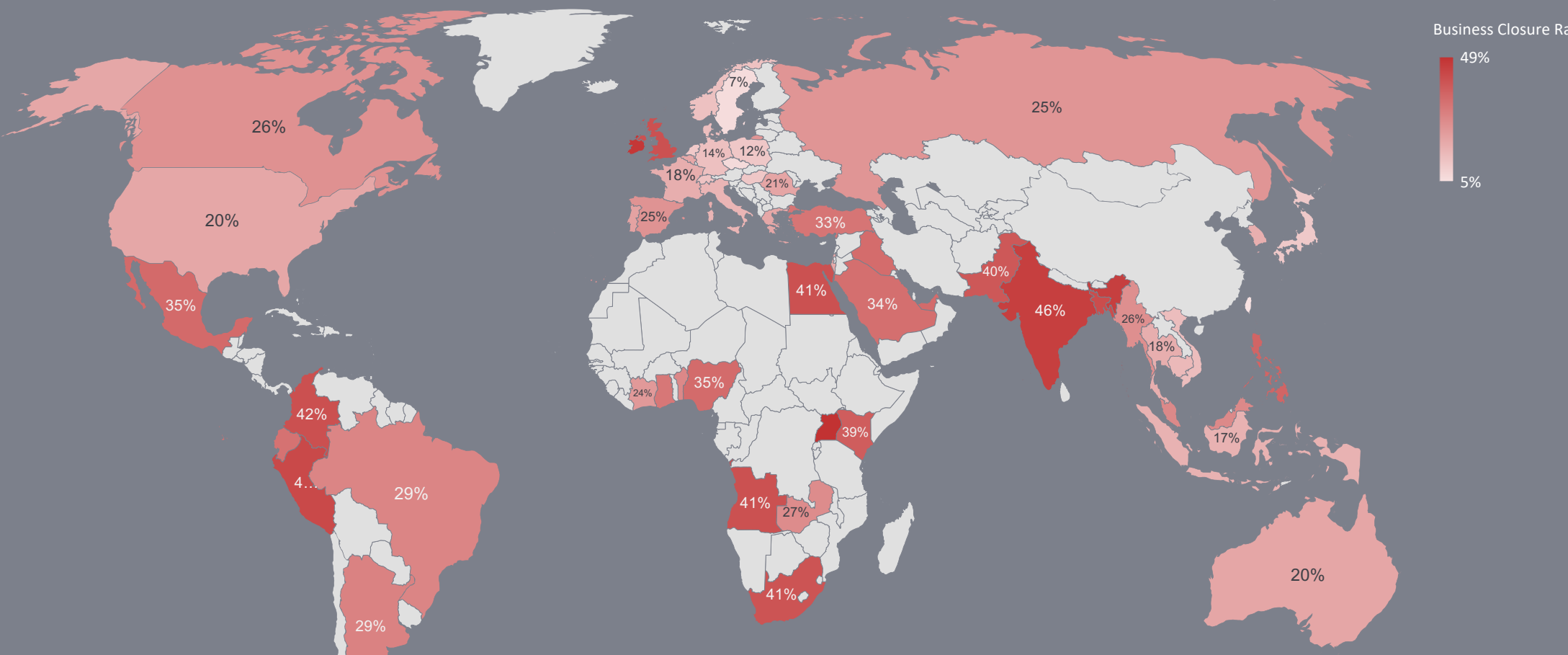
Sreelakshmi Papineni, World Bank Africa Gender Innovation Lab



A gender lens on the impact of the COVID-19 pandemic on entrepreneurs



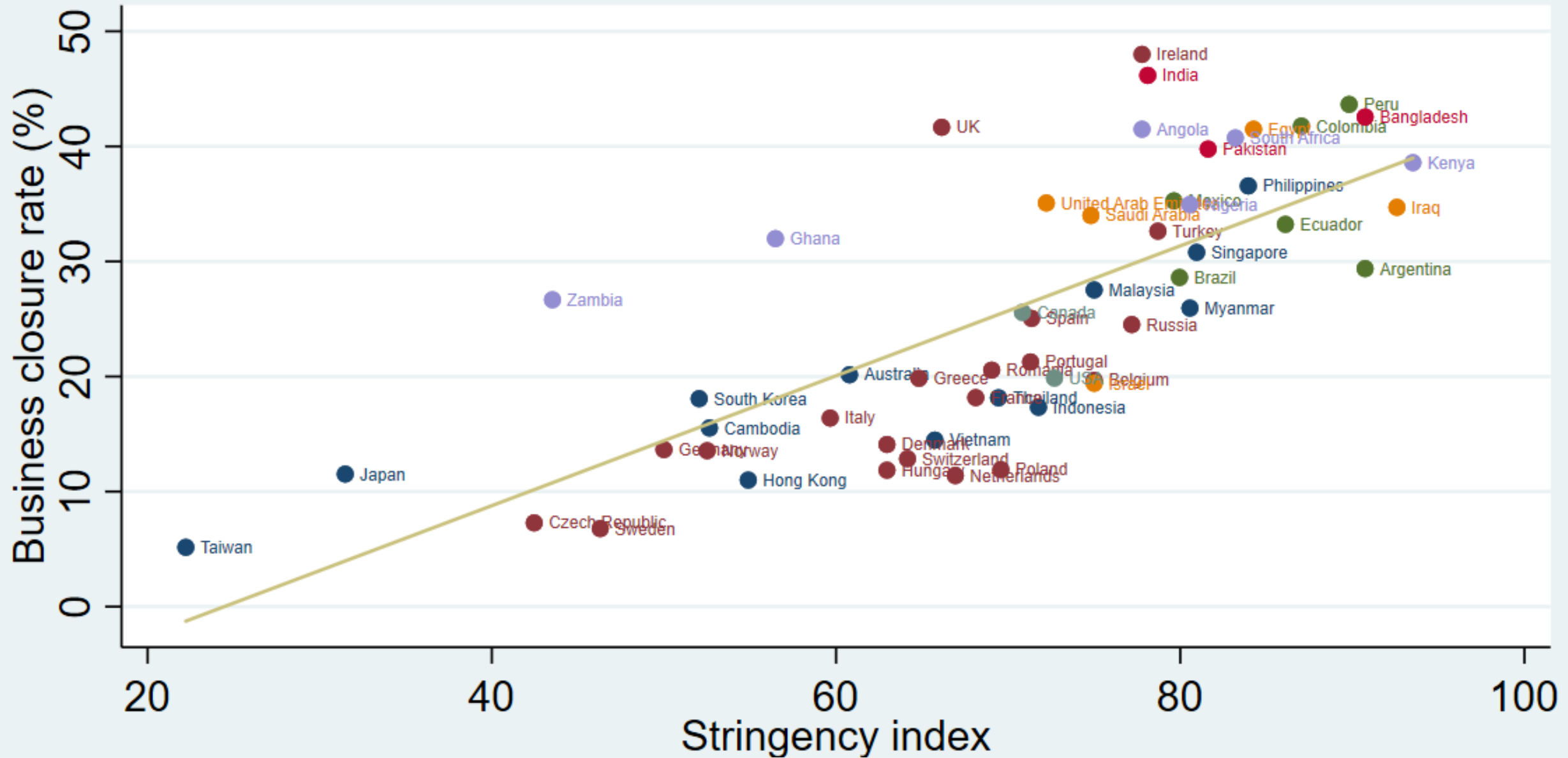
Business Closure Rate Facebook Future of Business COVID-19 Wave 1 May 28th-31st



Sample: 26,038 observations 75 countries
Global = 26%
“Rest of Sub Saharan Africa” = 32%

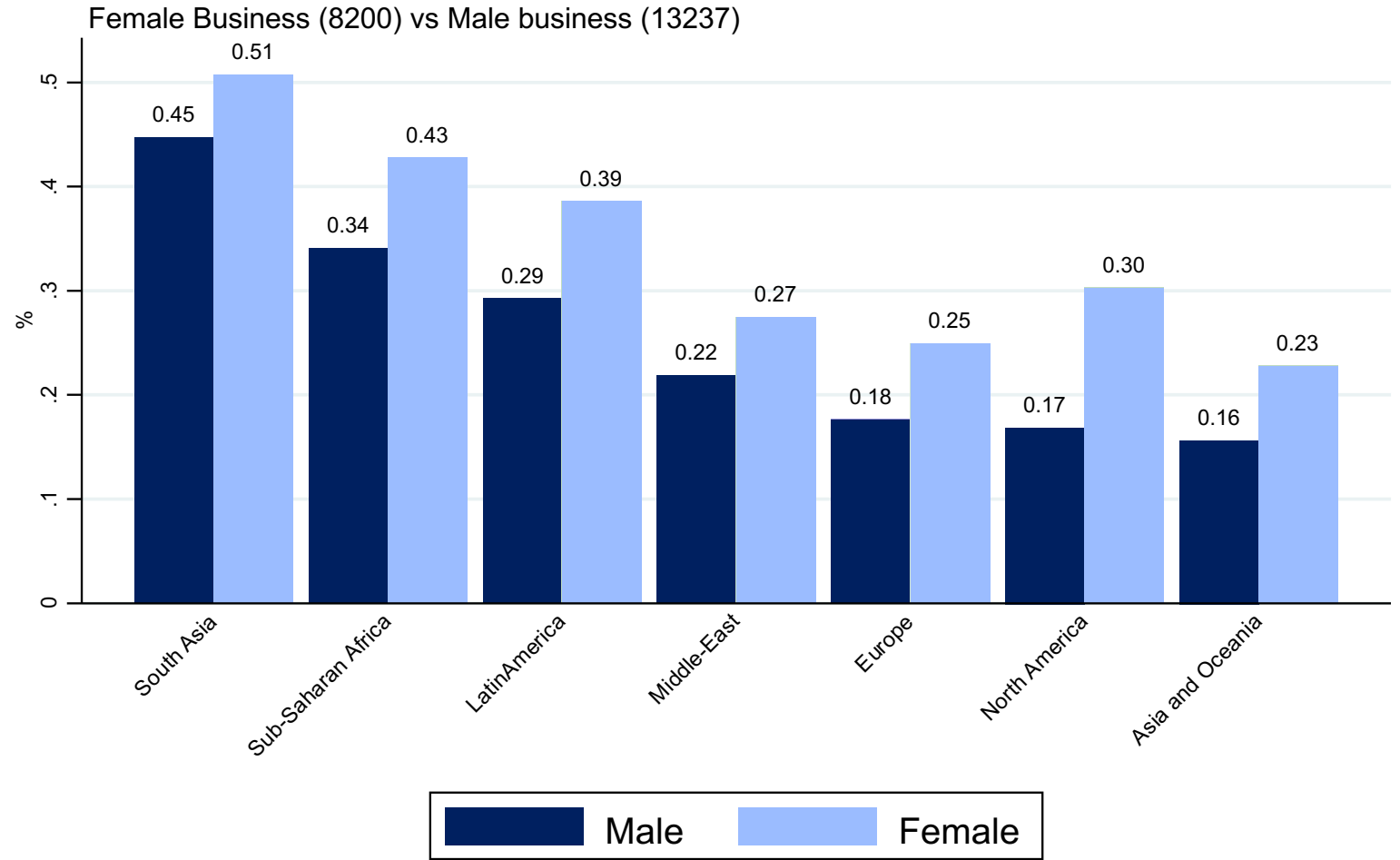
Powered by Bing
 © GeoNames, Microsoft, Navinfo, TomTom, Wikipedia

Business closure and lockdown stringency



- Globally, female-owned businesses were 5.9 percentage points more likely to close their business than male-owned businesses, when controlling for region.

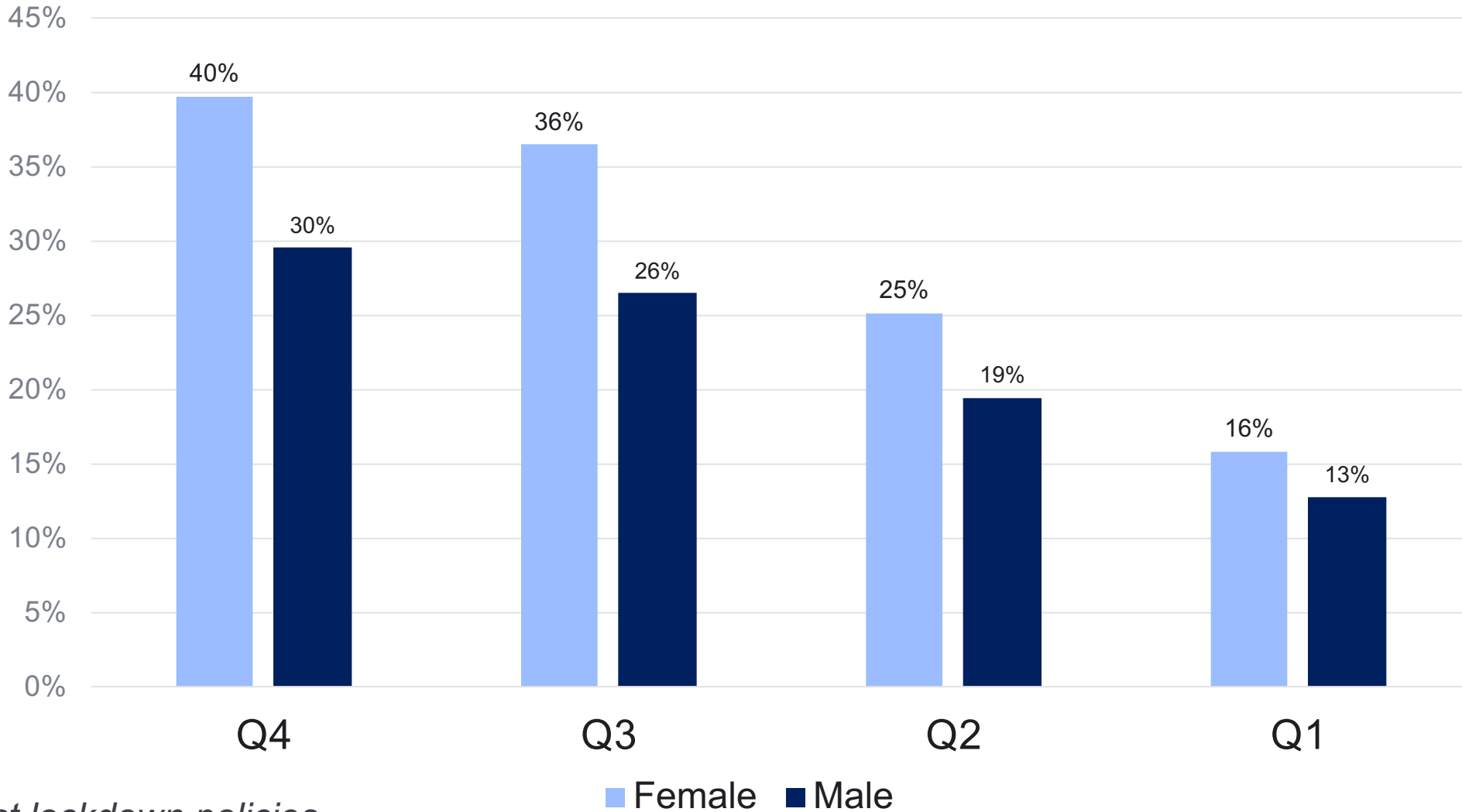
Region: Business Closure Rate by Gender



Sample: Europe(9031), North America(1457), LAC(1836), Asia & Oceania(4713), South Asia(976), SSA(2765), Middle-East(711)
 Regional averages computed using country average (conditional female>100)



Gender Gap Closures by Lockdown Stringency Quartile



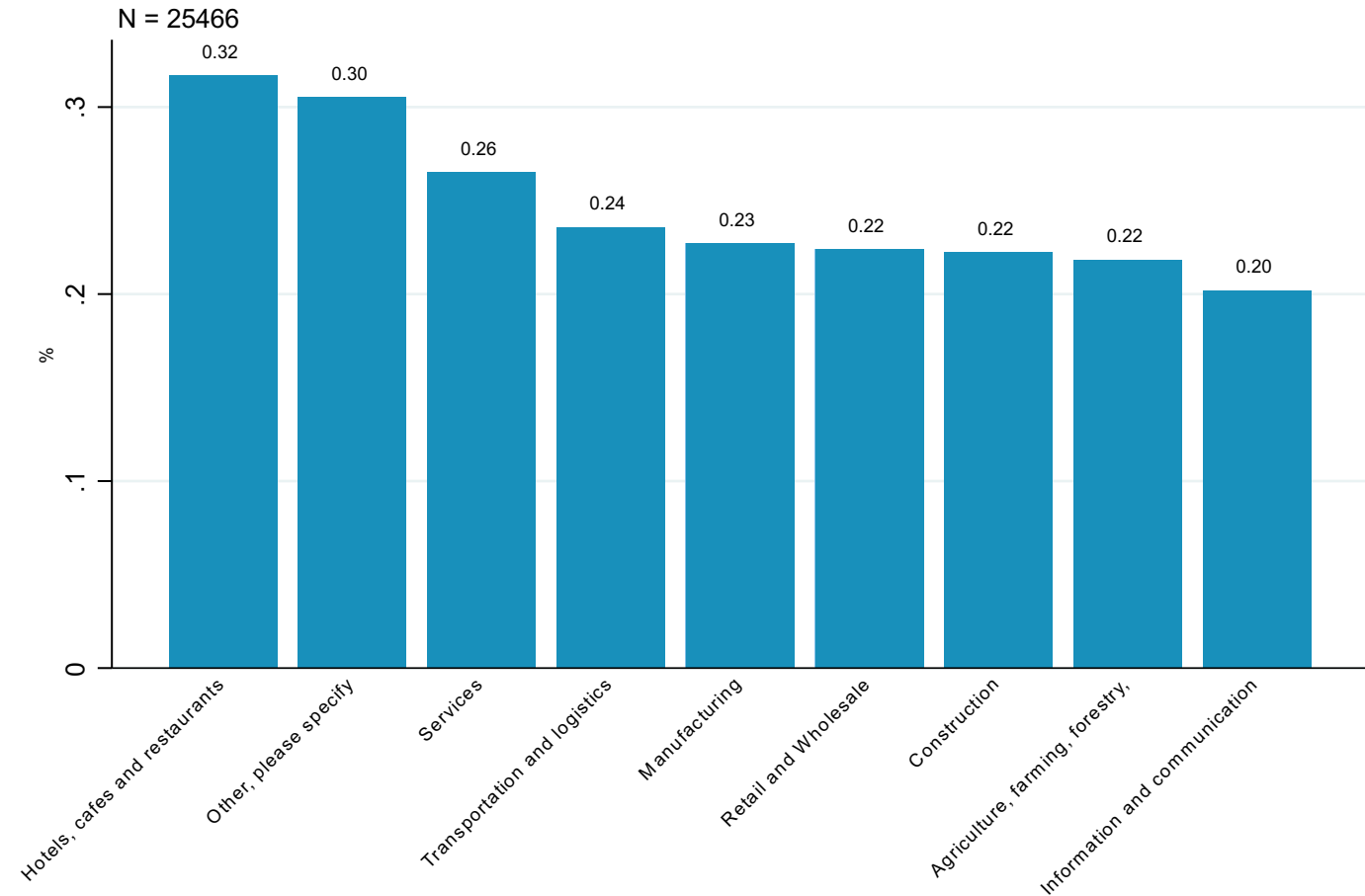
Q4 = strictest lockdown policies in place during the survey period



Sector

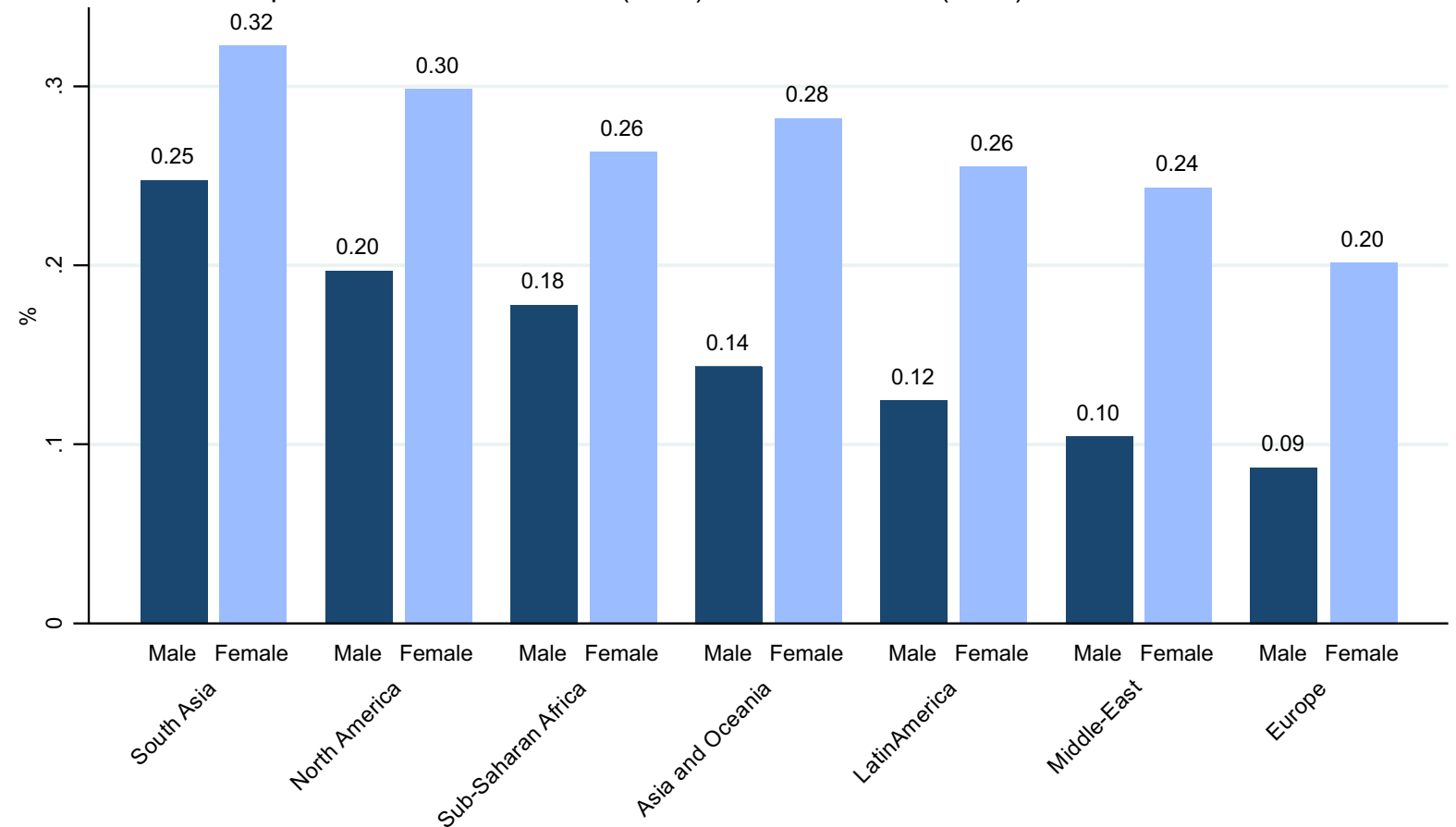
Within services, men are more likely to operate in the “**professional services**” sector which faced relatively lower business closures than “**education and child care services**” and “**wellness, personal grooming, sports and fitness services,**” where women business owners are more likely to be concentrated.

Business Closures by Sector



More than 6h per day in domestic tasks or family care activities

Business in operation: Female Business(3214) vs Male business(5952)



Sample: Europe(4071), North America(623), LAC(766), Asia & Oceania(2056), South Asia(306), SSA(790), Middle-East(572)
 Regional averages computed using country average (conditional female>100)
 Married Households

Time Spent on Domestic Tasks

- A large proportion of operational businesses are also having to manage domestic responsibilities.

- This could be the result of the extra burden that may come from staying home during a quarantine or school closures or having to take care of other family members who have fallen ill.

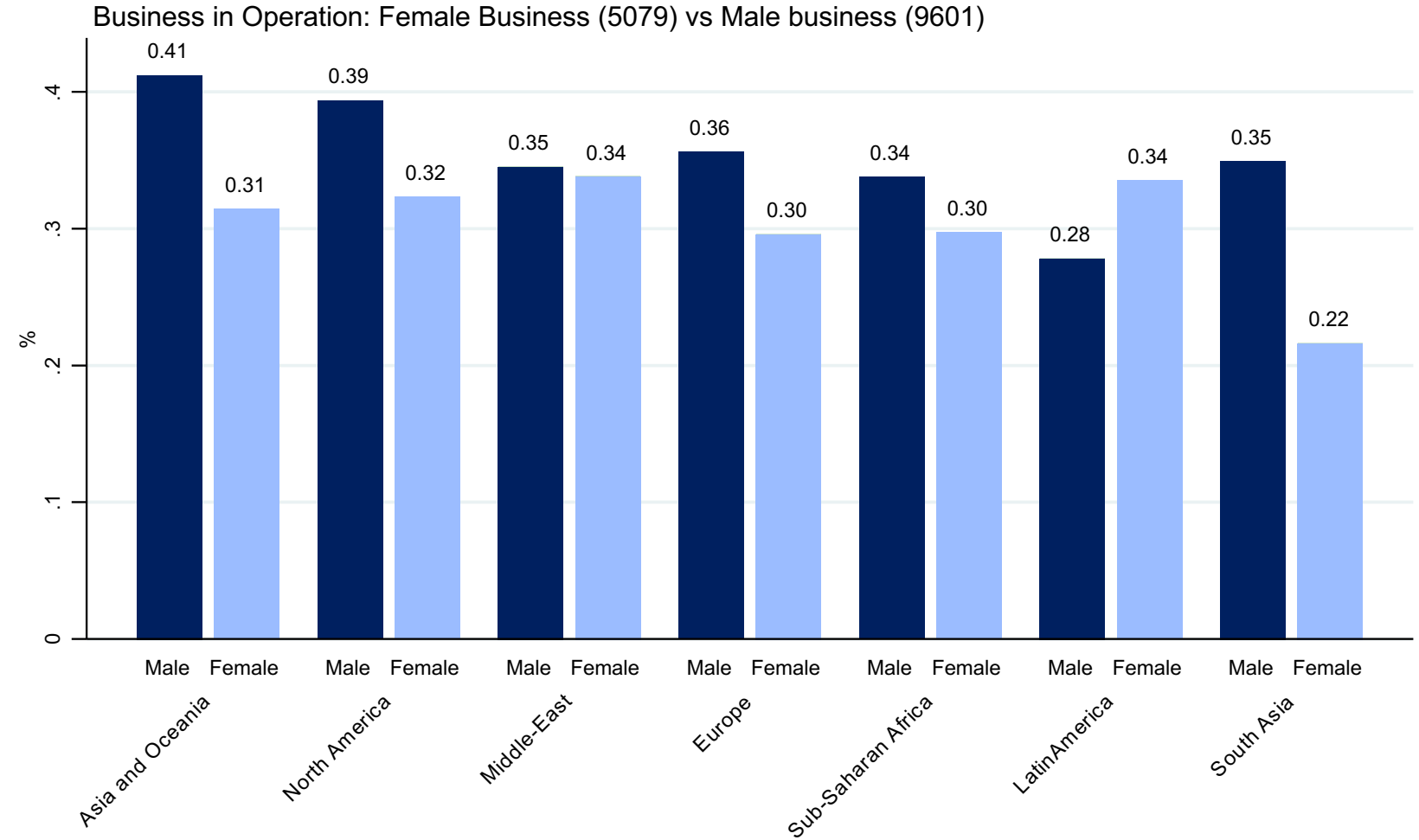
- Women were more likely to close their business as a result of a school closure policy than men.



Loans

- Businesses that have an outstanding loan at the time of the survey.
- 45% of those with outstanding loans report a “loan payment deferral” is a needed policy at this time.

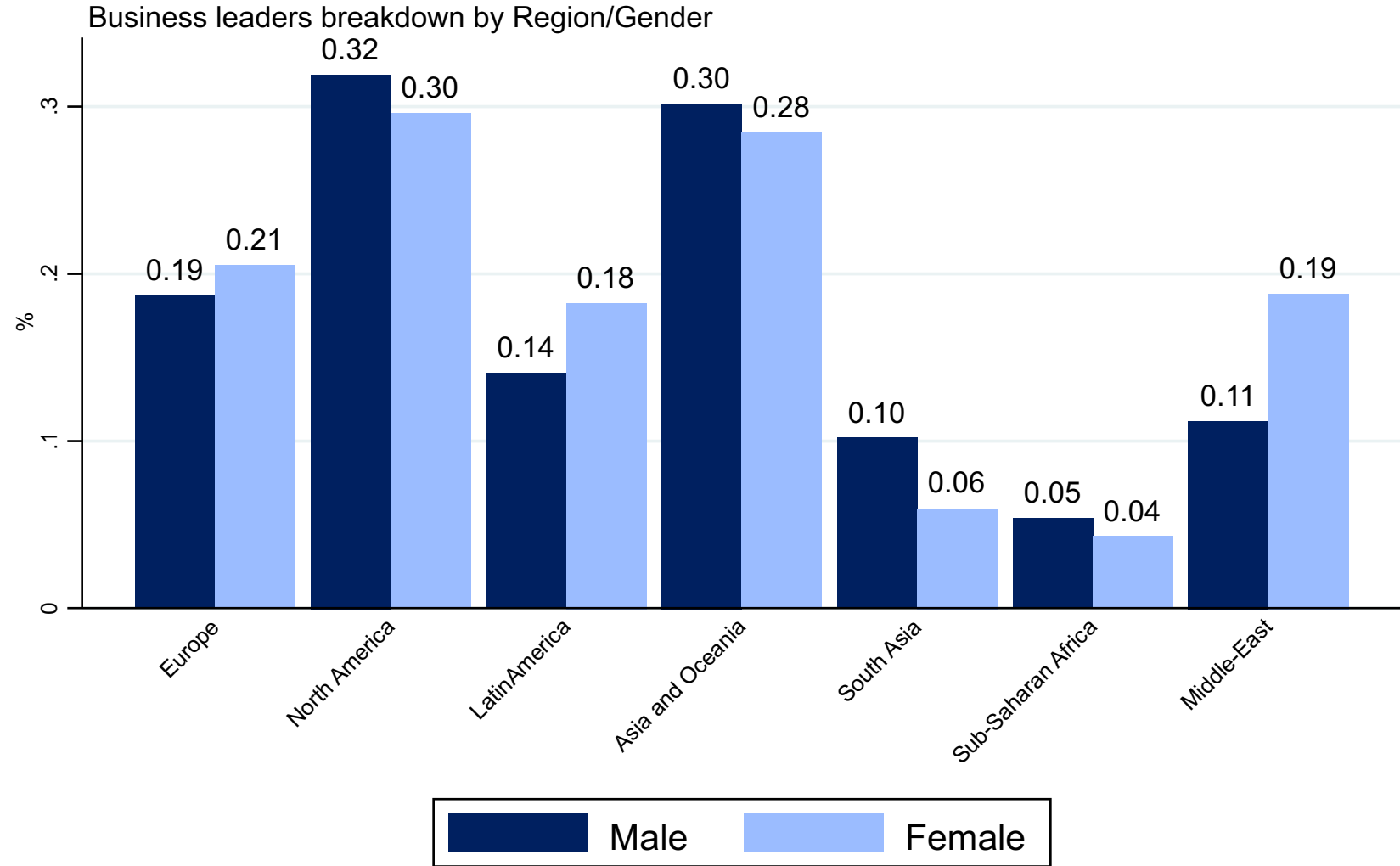
Access to finance



Sample: Europe(6125), North America(936), LAC(1296), Asia & Oceania(3293), South Asia(571), SSA(1486), Middle-East(1004)
 Regional averages computed using country average (conditional female>100)
 Excluding do not know

- **COVID-19 Response**
- Regional disparities in the likelihood a business is receiving financial assistance.
- Business owners in Sub-Saharan Africa and South Asia are the least likely to be receiving any financial assistance at this time.

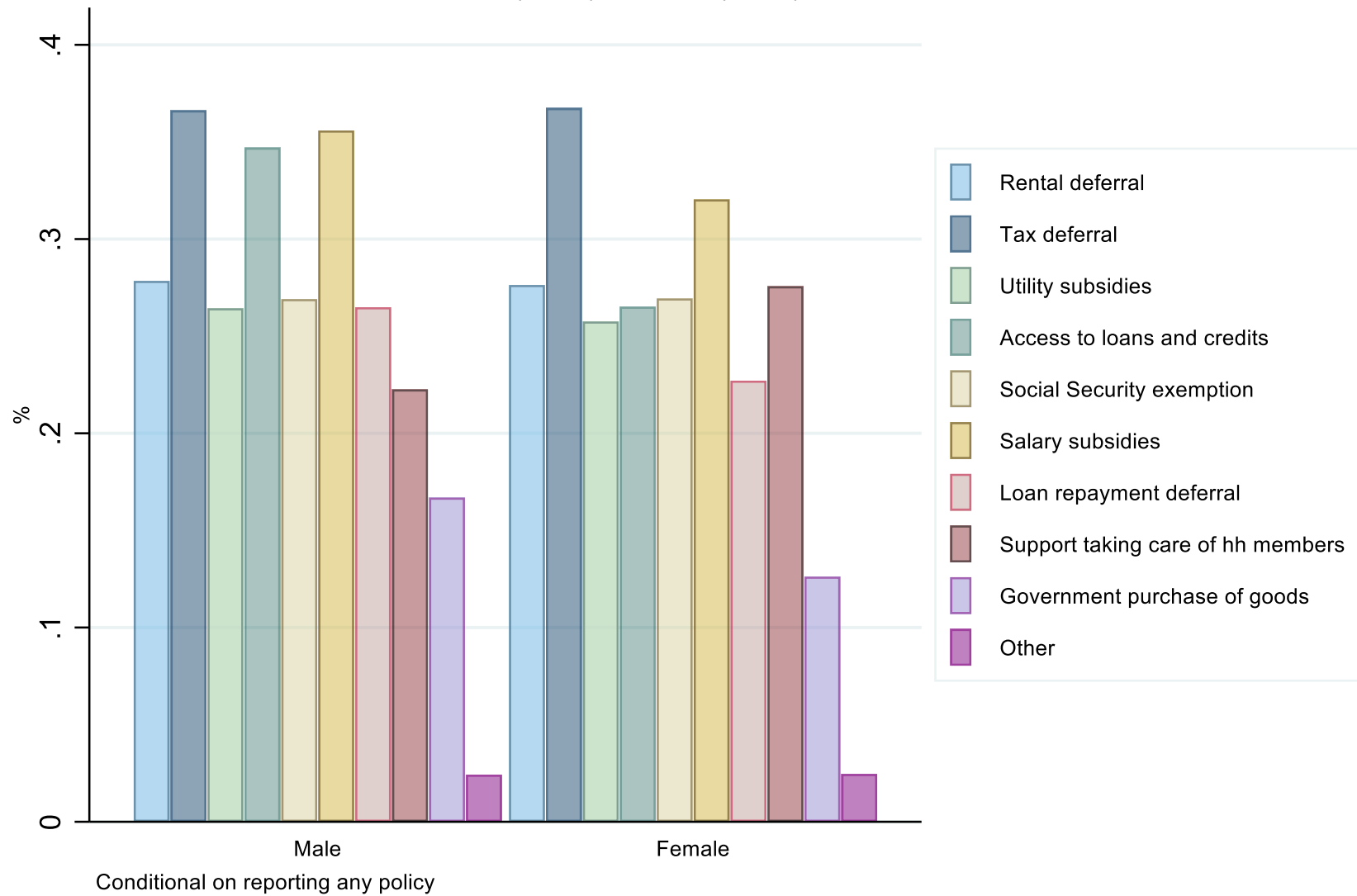
Receiving any form of financial assistance in response to COVID-19



Sample: Europe(6854), North America(1082), LAC(1825), Asia & Oceania(3595), South Asia(993), SSA(2237), Middle-East(1315)
 Regional averages computed using country average (conditional female respondents >= 100)

Most Needed Policies

Business in operation - Female (4469) vs Male (9079)



For more visit:

www.worldbank.org/africa/gil

www.dataforgood.fb.com/tools/future-of-business-survey/

