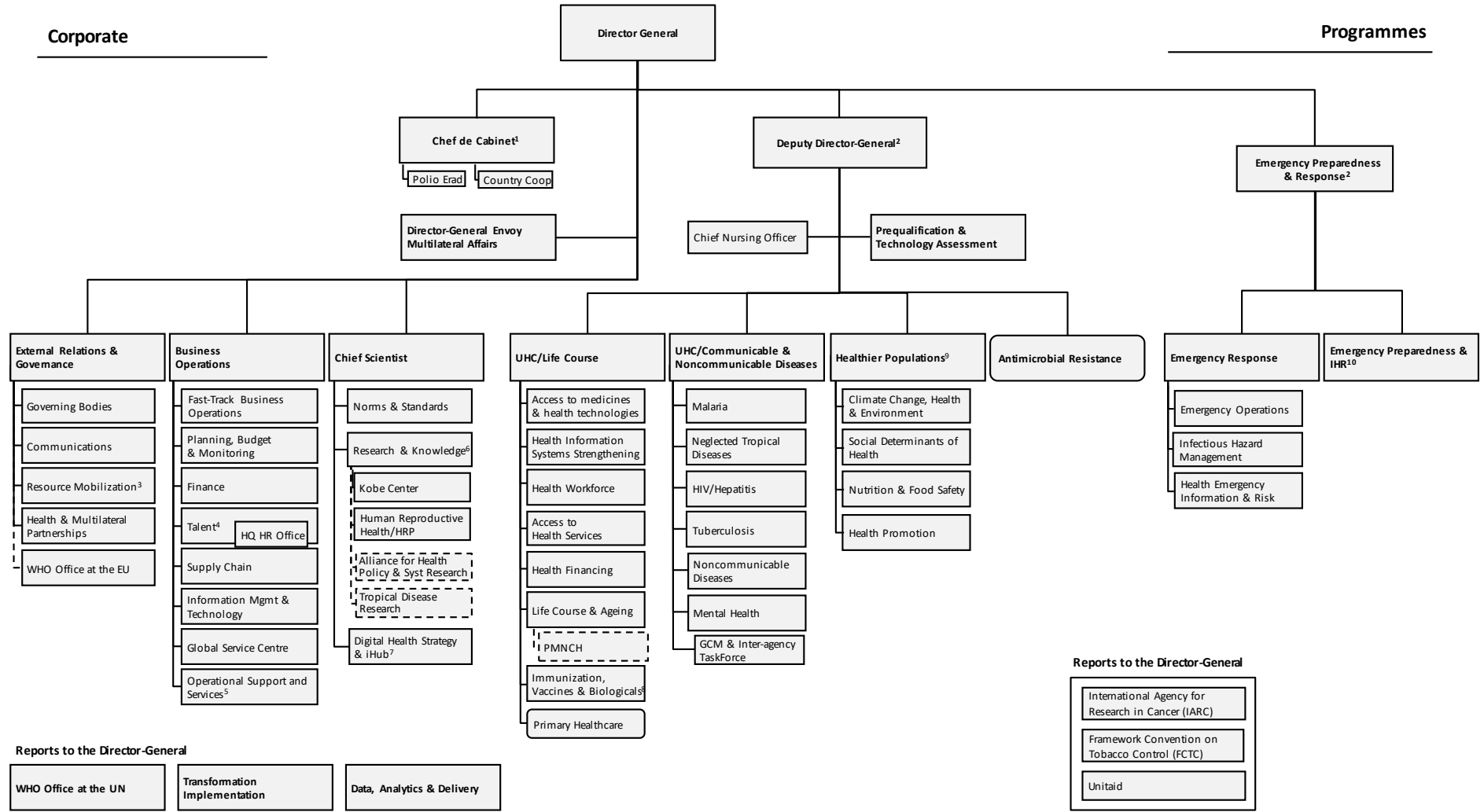


New HQ Structure (6 March 2019)

- Departments
- Partnership /hosted entity
- Cross cutting initiatives



¹ includes Office of the Director General (DGO) with GPMB, IOAC, IOS, LEG, CRE, EVL, GER, OMB, GBA, Advisors

² offices of DDG and ExD/Emergencies include oversight of network for HQ technical programme planning & monitoring

³ includes centralized grant management team; ⁴ includes Budapest Office; ⁵ includes Tunis Center and SEC; ⁶ includes SPI functions; ⁷ provisional housing of Innovation Hub

⁸ includes Polio Transition; ⁹ includes migration and health; ¹⁰ includes Lyon Office