

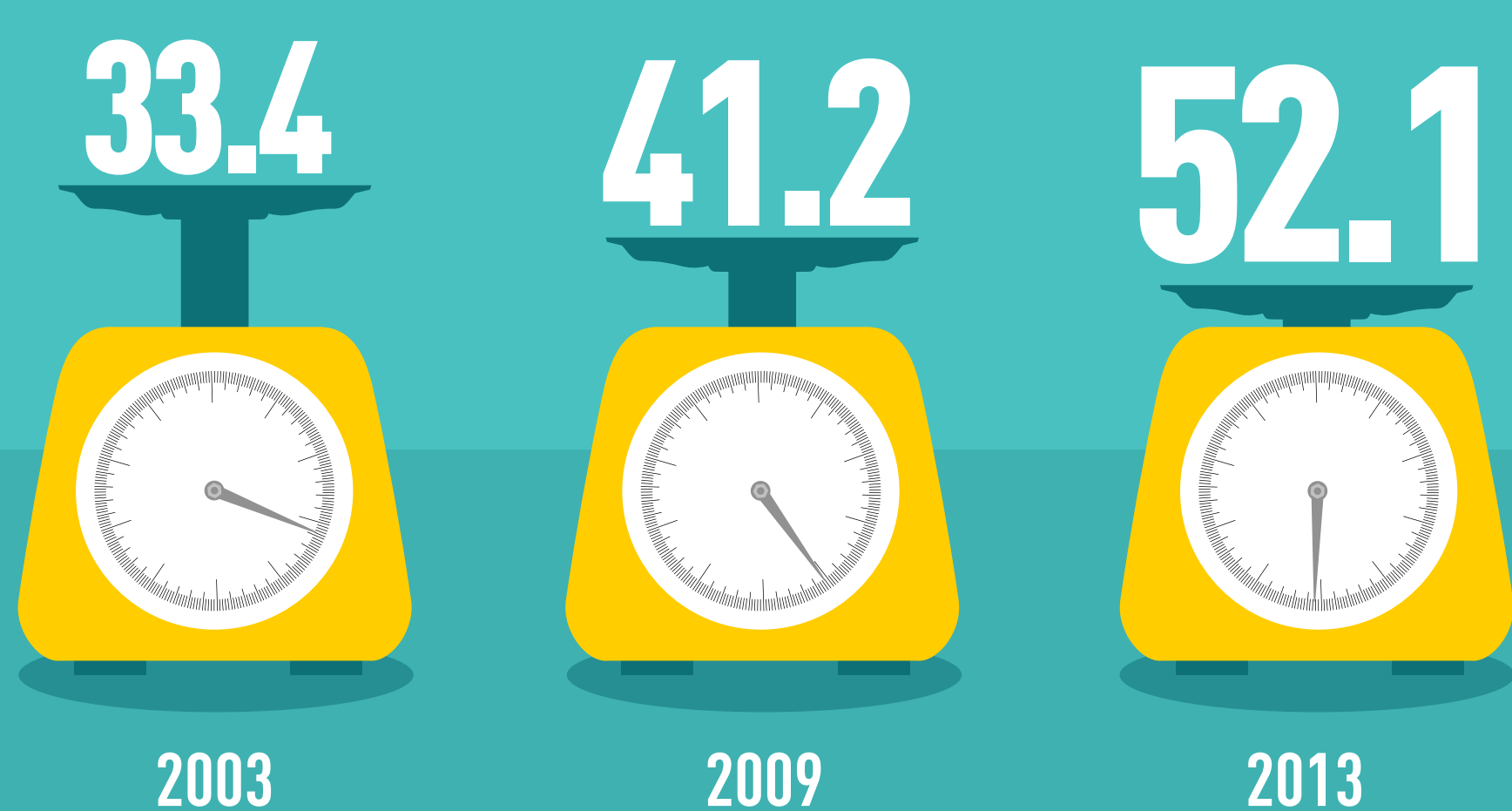
# ENVIRONMENTAL SUSTAINABILITY AT Nestlé

We aim to make our products better for the environment along the value chain. So how did we do this year?



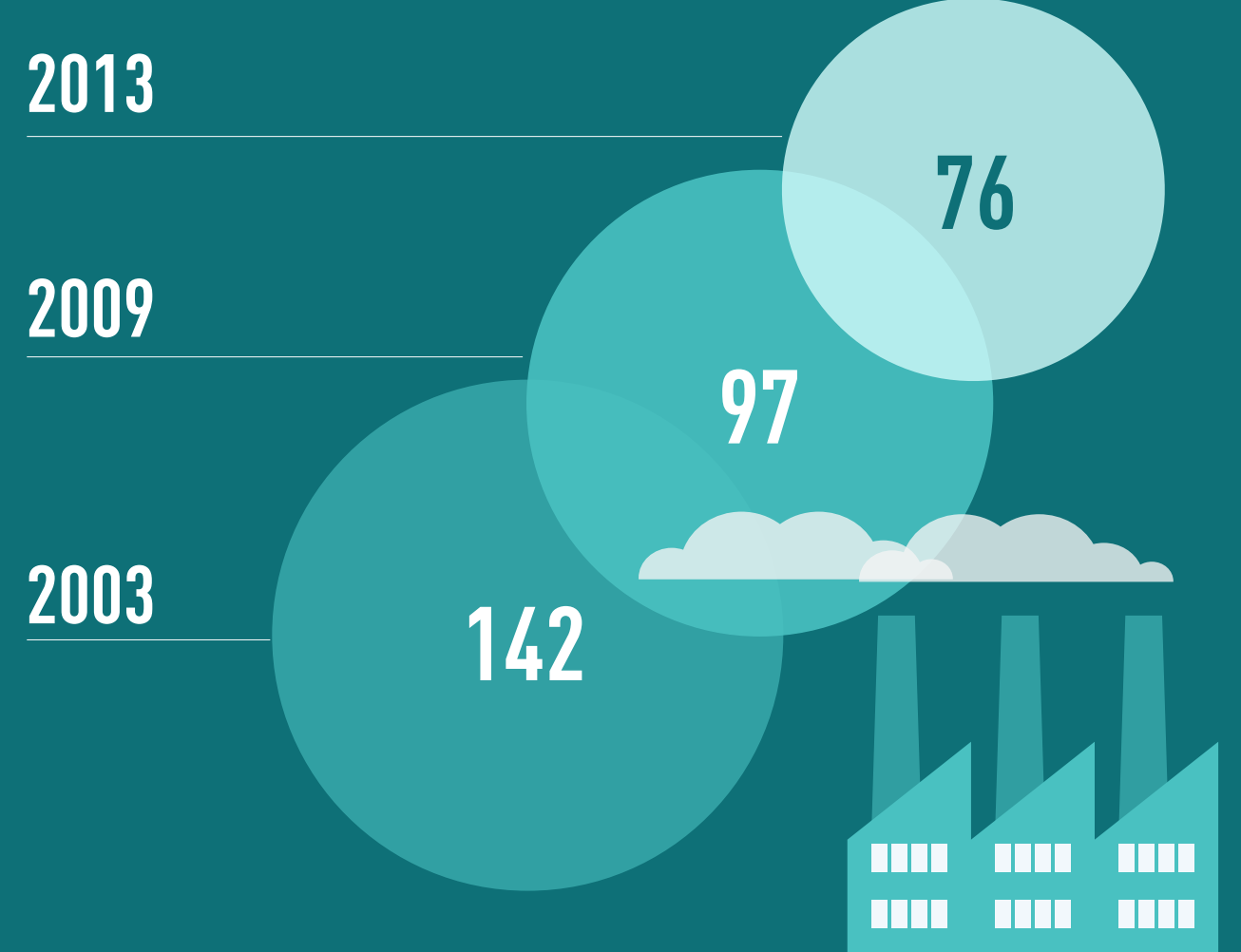
## At Nestlé we're producing more and more of the world's favorite products

Total production volume (million metric tons)



## But using resources more efficiently

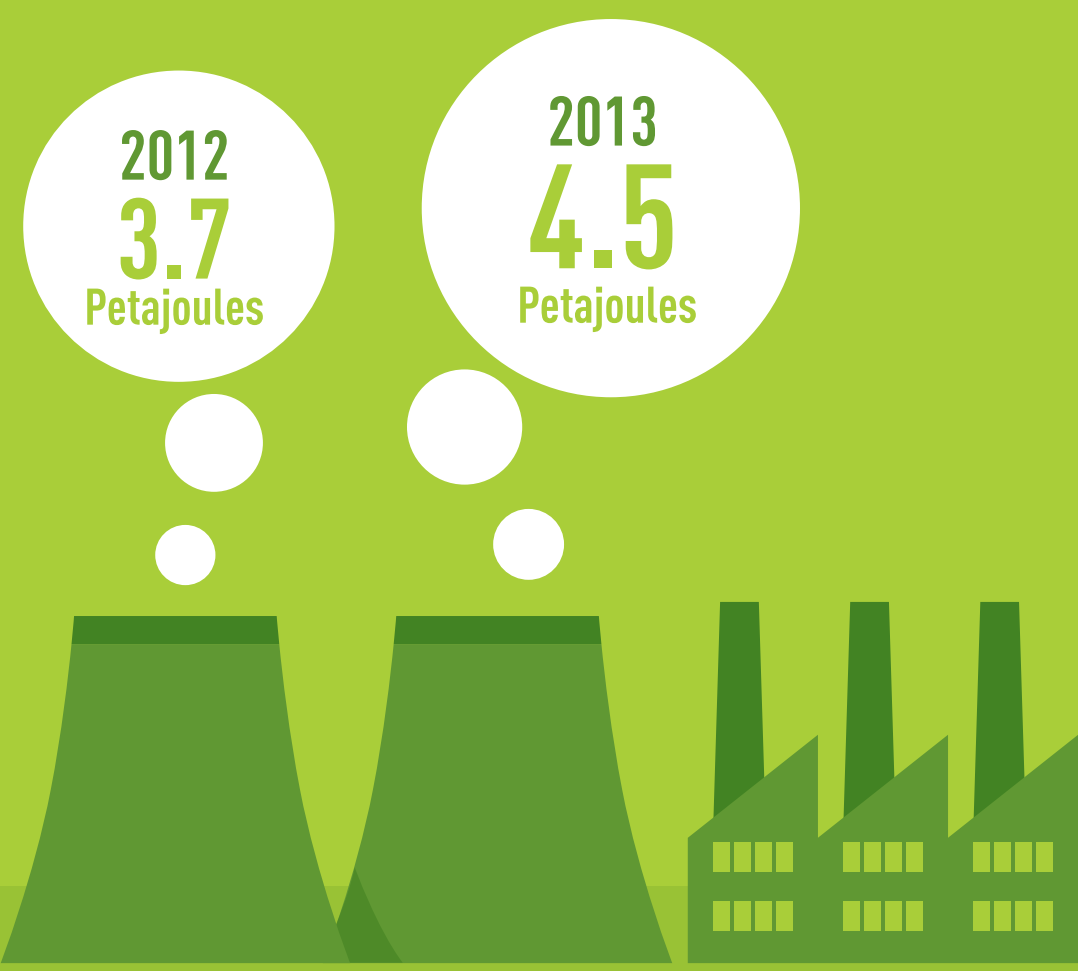
Direct greenhouse gas emissions per metric ton of product (kg CO<sub>2</sub>)



## Of course there's room for improvement

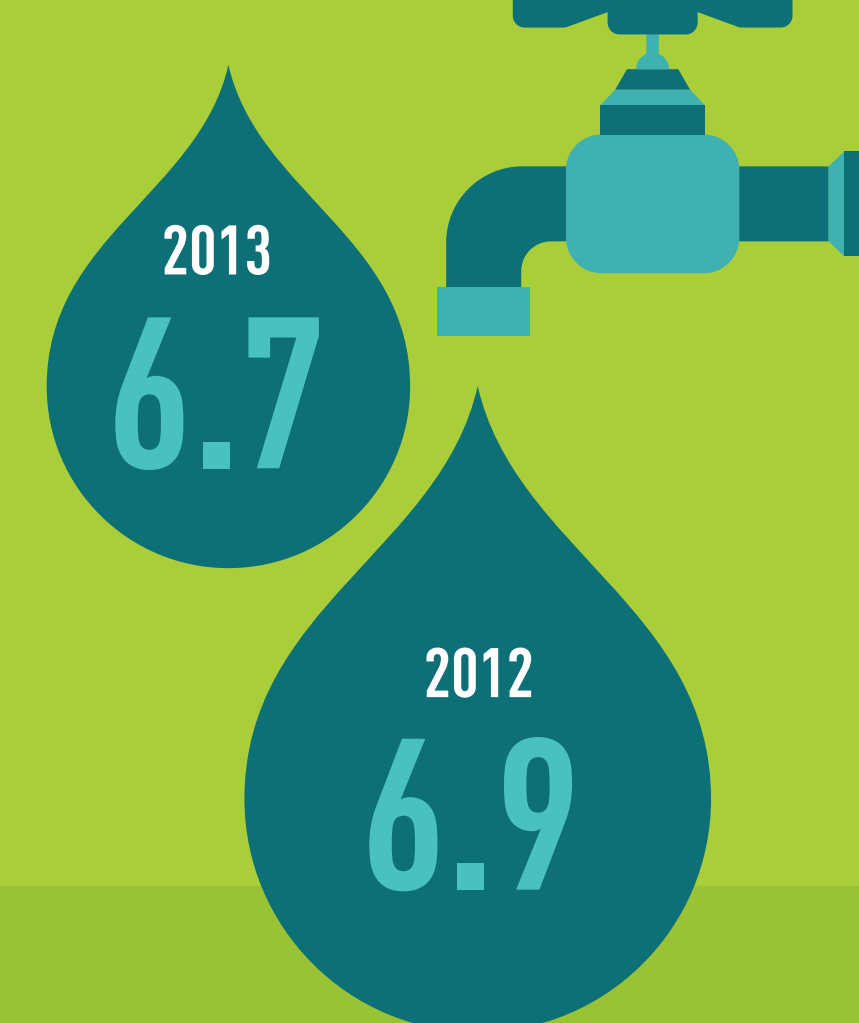
### We want to use fewer fossil fuels

Direct energy consumption from coal



### We want to recycle or re-use more water

Total water recycled in millions of cubic meters



this makes an overall energy reduction of:

**33.8%**



**27.1%**

of our packaging comes from recycled materials

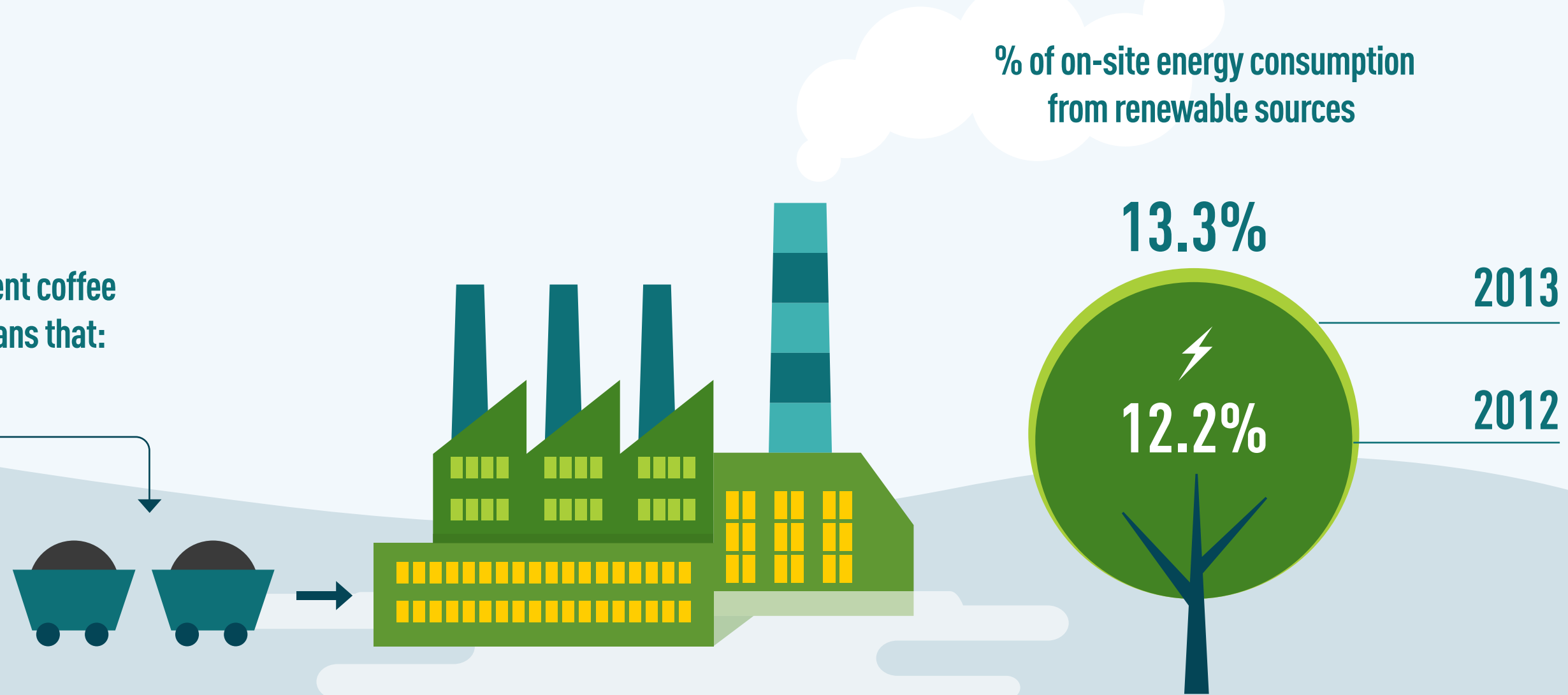


## Overall we are delivering in key areas

### RENEWABLE ENERGY

More than 20 Nestlé factories are using spent coffee grounds as a renewable fuel. This also means that:

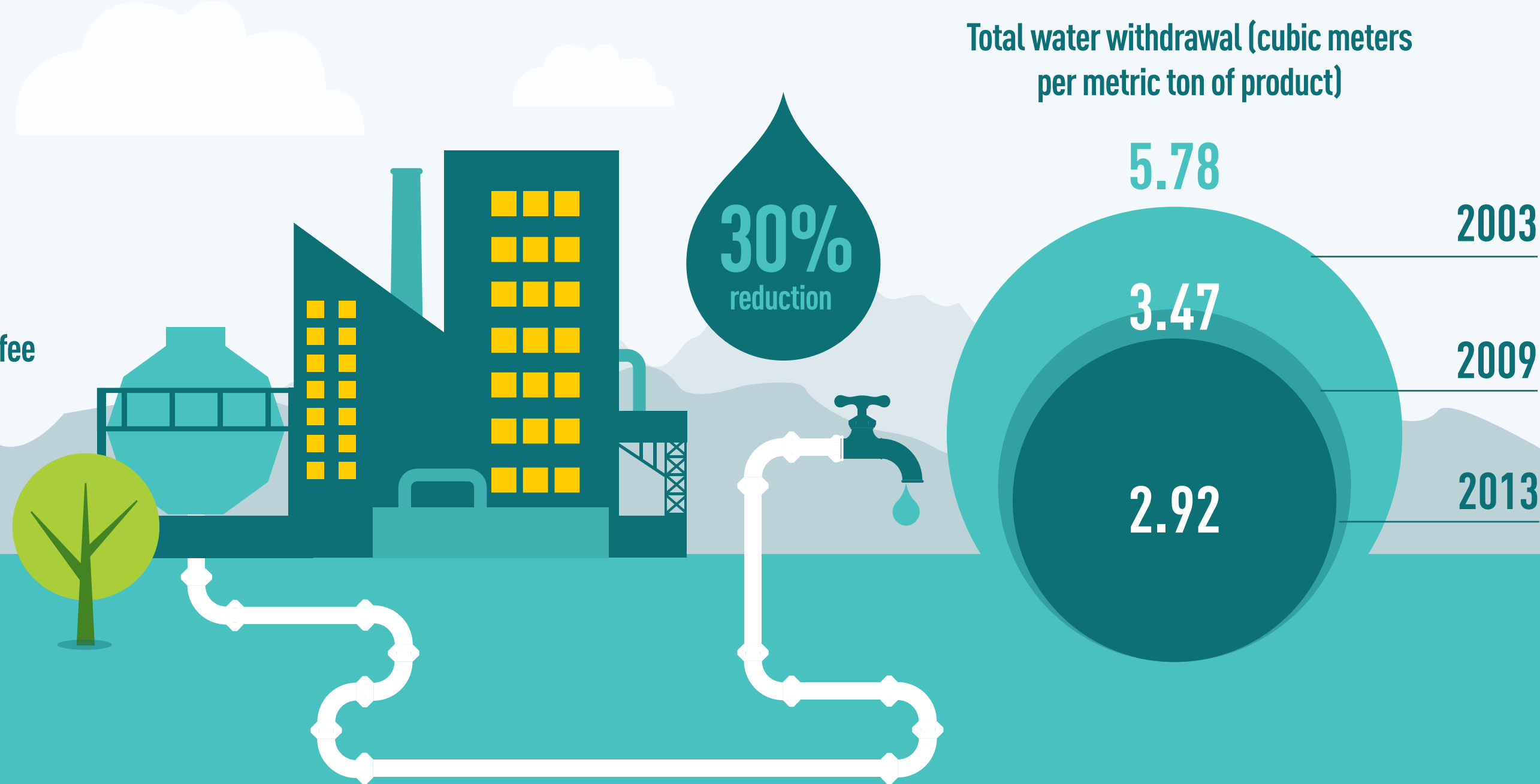
**800,000**  
metric tons per year of spent coffee grounds do not have to be landfilled



### WATER

A new water treatment plant in our coffee factory in Tri An, Vietnam will save

**36,000m<sup>3</sup>**  
of water a year  
that's a 30% reduction.



### WASTE

61 of our 447 factories worldwide have achieved

**Zero waste for disposal**

